

**INTERPERSONAL RELATIONSHIP AND
SOCIAL EXCHANGE IN GREEN'S THE FAULT IN
OUR STARS CHARACTERS: PSYCHOLOGICAL
APPROACH**

THESIS



**By:
Marson
161210001**

**ENGLISH DEPARTMENT
FACULTY OF SOCIAL SCIENCE AND HUMANITIES
PUTERA BATAM UNIVERSITY
YEAR 2020**

**INTERPERSONAL RELATIONSHIP AND
SOCIAL EXCHANGE IN GREEN'S THE FAULT IN
OUR STARS CHARACTERS: PSYCHOLOGICAL
APPROACH**

THESIS

**To fulfill one of the requirements
to obtain a bachelor's degree**



**By:
Marson
161210001**

**ENGLISH DEPARTMENT
FACULTY OF SOCIAL SCIENCE AND HUMANITIES
PUTERA BATAM UNIVERSITY
YEAR 2020**

SURAT PERNYATAAN ORISINALITAS

Yang bertanda tangan di bawah ini saya:

Nama : Marson
NPM : 161210001
Fakultas : Ilmu Sosial dan Humaniora
Program Studi : Sastra Inggris

Menyatakan bahwa “Skripsi” yang saya buat dengan judul:

INTERPERSONAL RELATIONSHIP AND SOCIAL EXCHANGE IN GREEN’S THE FAULT IN OUR STARS CHARACTERS: PSYCHOLOGICAL APPROACH

Adalah hasil karya sendiri dan bukan “duplikasi” dari karya orang lain. Sepengetahuan saya, didalam naskah Skripsi ini tidak terdapat karya ilmiah atau pendapat yang pernah ditulis atau diterbitkan oleh orang lain, kecuali yang secara tertulis dikutip didalam naskah ini dan disebutkan dalam sumber kutipan dan daftar pustaka.

Apabila ternyata di dalam naskah Skripsi ini dapat dibuktikan terdapat unsur-unsur PLAGIASI, saya bersedia naskah Skripsi ini digugurkan dan gelar akademik yang saya peroleh dibatalkan, serta diproses sesuai dengan peraturan perundang-undangan yang berlaku.

Demikian pernyataan ini saya buat dengan sebenarnya tanpa ada paksaan dari siapapun.

Batam, 14 Febuari 2020



Marson
161210001

DECLARATION OF THE THESIS ORIGINALITY

1, Marson, NPM No. 161210001

Hereby declare that the thesis entitled

INTERPERSONAL RELATIONSHIP AND SOCIAL EXCHANGE IN GREEN'S THE FAULT IN OUR STARS CHARACTERS: PSYCHOLOGICAL APPROACH

Is the real work of myself and I realize that thesis has never been published in other media before, partially or entirely, in the name of mine or others.

Batam, 14th Febuary 2020

Marson
161210001

**INTERPERSONAL RELATIONSHIP AND
SOCIAL EXCHANGE IN GREEN'S THE FAULT IN
OUR STARS CHARACTERS: PSYCHOLOGICAL
APPROACH**


THESIS

**To fulfill one of the requirements
to obtain a bachelor's degree**

**By
Marson
161210001**

**Has been approved by the Advisor
on the date as stated below**

Batam, Febuary 14th 2020


Tomi Arianto, S.S., M.A.
Advisor

ABSTRAK

*Penelitian ini bertujuan untuk menganalisis psikologis karakter tokoh utama dalam novel *The Fault in Our Stars* khususnya hubungan antara Hazel dan Augustus. Untuk menganalisis data tersebut, ada dua teori yang akan di gunakan dalam penelitian ini, yang pertama adalah teori Robert S. Feldman yang di gunakan untuk mengetahui dan menjelaskan hubungan interpersonal yang berfokus pada penyebab internal dalam mengembangkan hubungan Hazel dan Augustus dan teori Thibaut dan Kelley yang digunakan untuk mengetahui dan menjelaskan pertukaran sosial yang berfokus pada penyebab eksternal dalam mengembangkan hubungan Hazel dan Augustus. Penelitian ini menggunakan metode kualitatif, yang digunakan untuk menganalisis hubungan karakter utama terutama pada Hazel dan Augustus. Data untuk penelitian ini telah diambil dari teks novel. Hasil penelitian ini menemukan bahwa Hazel dan Augustus telah mengembangkan hubungan melalui faktor internal dan eksternal. Pengembangan hubungan terbukti melalui empat faktor internal; kesamaan, kebersamaan rasa suka, individualitas positif, dan bentuk dan cara fisik. Kedua, ada juga dua faktor eksternal lain yang memberikan dampak besar dalam pengembangan hubungan karakter, yaitu komplikasi dan hambatan. Peneliti menemukan bahwa faktor internal dan eksternal terbukti dapat mengubah perkembangan psikologis karakter. dapat dilihat bahwa faktor-faktor seperti kesamaan diperlukan untuk membangun hubungan yang baik. Mereka tidak dapat membangun hubungan tanpa memiliki sikap dan pemikiran yang sama. Mereka juga tidak dapat mempertahankan hubungan tanpa mengalami masalah eksternal. Akibatnya, faktor internal dan eksternal akan memberikan peran besar dalam mengembangkan pengembangan hubungan karakter mereka.*

Kata Kunci: *Hubungan Antarpribadi, Psikologi, Pertukaran Sosial, The Fault in Our Stars*

ABSTRACT

This study aimed to analyze the psychological of the characters in *The Fault in Our Stars* novel, especially the relationship between Hazel and Augustus. To analyze the data, there were two theories that have been used in this study, the first was Robert S. Feldman's theory which was used to identify and explain interpersonal relationships that focused on internal causes in developing the relationship of Hazel and Augustus and Thibaut and Kelley's theories used to identify and explain social exchanges that focused on external causes in developing Hazel and Augustus' relationships. This study used qualitative method, which was used to analyze the relationship of the main characters, especially on Hazel and Augustus. The data for this research were taken from the text of the novel. The result of this research found that both Hazel and Augustus have developed the relationship through internal and external factors. The relationship development was proven through four internal factors; similarity, reciprocity of liking, positive individuality, and physical form and manner. Secondly, there were also another two external factors that gave a huge impact in the character relationship development they are complication and hindrance. The researcher found that the internal and external factor was proven that it could change the psychological development of a character. It could be seen that the factors such as similarity were needed to build a good relationship. They could not build relationship without having similar attitude and thinking. They also could not maintain relationship without having some external problem occurred to them. As a result, the internal and external factors will give a huge role in developing their character relationship development.

Key Words: Interpersonal Relationship, Psychological Approach, Social Exchange, *The Fault in Our Stars*

MOTTO AND DEDICATION

**“NEVER TROUBLE ABOUT TROUBLE UNTIL TROUBLE TROUBLES
YOU”**

This thesis is dedicated to:

I present this thesis for those who always ask
“When is your Graduation?”

The delay of someone to pass or not on time is not a disgrace, not a crime, not the end of all people’s lives. Finish graduation first also doesn’t mean a measure for success or good financial. The most important thing is the best thesis that can be completed without any help from the consultant service for making thesis.

- Beloved parents: Heryanto & Tini
- Beloved sisters: Janerica & Desica
- Beloved peers in English Literature class and all of my friends that help much for doing this research. Thank you so much

ACKNOWLEDGMENT

Praise to Allah, the most Gracious and Beneficent. The researcher is very grateful to Him who has been always giving him His blessing, healty, ability and opportunities to accomplish this thesis entitled “interpersonal relationship & social exchange of the main characters in the fault in our stars novel by John Green: Psychological approach”. This paper is going to be presented to English Departmen of Putera Batam University to fulfill the requirement needed for strata one degree.

The researcher would like to say thanks to beloved father and mother for the love inspiring, blessing and support to the researcher for taking this graduated program. The researcher also wishes to express his gratitude and appreciation to Mr. Tomi Arianto, S.S., M.A. as his advisor who contributed his ideas and time in arranging this thesis.

Furthermore, the researcher would like to express gratitude to all people who involve directly and indirectly in this research, especially to:

1. Ibu Nur Elfi Husda, S.Kom., M.Si., Rector of Putera Batam University.
2. Ibu Rizki Tri Anugrah Bhakti, S.H., M.H., Dean of Putera Batam University.
3. Ms. Afriana, S.S., M.Pd., Head of English Department of Putera Batam University.
4. All lectures of English Department, for their motivation, knowledge, and passion given during the class at Putera Batam University.
5. All of the friends who have given support, motivation, pray, and suggestions to the researcher.

The researcher hopes that the suggestions from the reader can be a support to make better in the next paper project.

Batam, Febuary 14th 2020

Marson
161210001

TABLE OF CONTENTS

	Page
COVER	i
TITLE PAGE	ii
STATEMENT PAGE	iii
DECLARATION OF THE THESIS ORIGINALITY	iv
APPROVAL PAGE	v
ABSTRAK	vi
ABSTRACT	vii
MOTTO AND DEDICATION	viii
ACKNOWLEDGMENT	ix
TABLE OF CONTENTS	x
LIST OF FIGURES ..	xii
CHAPTER I INTRODUCTION	
1.1 Background of the Research	1
1.2 Identification of the Problem.....	6
1.3 Limitation of the Problem	6
1.4 Formulation of the Problem	6
1.5 The Objective of the Research	7
1.6 The Significance of the Research.....	7
1.7 Definition of Key Terms	8
CHAPTER II REVIEW OF RELATED LITERATURE AND THEORETICAL FRAMEWORK	
2.1 Psychological Approach.....	9
2.2 Interpersonal Relationship.....	10
2.2.1 The Factor Influencing Friendship.....	11
2.2.1.1 Similarity.....	12
2.2.1.2 Reciprocity of Liking	12
2.2.1.3 Positive Individuality	13
2.2.1.4 Physical Form and Manners	14
2.3 Social Exchange	15
2.3.1 Complication	16
2.3.2 Hindrance	16
2.4 Previous Research	17
2.5 Theoretical Framework	23
CHAPTER III RESEARCH METHODOLOGY	
3.1 Research Design.....	24
3.2 Object of the Research	25
3.3 Method of Collecting Data.....	25
3.4 Method of Analyzing Data.....	26
CHAPTER IV FINDING AND DISCUSSION	
4.1. Element of Fiction.....	27
4.1.2 Plot	27
4.1.2 Setting	29
4.1.3 Theme.....	29

4.1.4 Character	33
4.1.5 Point of View	36
4.2. The factors of interpersonal relationship influencing both Hazel and Augustus friendship	37
4.2.1 Similarity	37
4.2.2 Reciprocity of Liking	40
4.2.3 Positive Individuality	41
4.2.4 Physical Form and Manners	42
4.3. The types of social exchange affect Hazel and Augustus relationship	44
4.3.1 Complication	45
4.3.2 Hindrance	47
CHAPTER V CONCLUSION	
5.1 Conclusion	51
5.2 Suggestion	52
REFERENCES	
APPENDICES	
Appendix 1. Curriculum Vitae	
Appendix 2. Data of the Research	
Appendix 3. Surat Keterangan Penelitian	

LIST OF FIGURES

	Page
Figure 2.1. Theoretical Framework.....	23

CHAPTER I

INTRODUCTION

1.1 Background of the Research

Nowadays every human or people in this world need a communication to build a relationship. the basic needs for human being are such as friendship, love and affection. All of these are a natural reason as human being to build a relationship. People with cancer have a limited interaction because most of them were treated as the special one. This treatment makes them lack interaction. As a result, it is hard for them to interact with people and build a relationship with other people. It could be found the example of the situation happened in the novel of “The Fault in our Stars”. Hazel as one of the main characters in the novel is an introvert person whereas she always rejects to meet anyone and stay in her room reading books. There is one time that she was forced to go to a cancer community where she found a lot of people who also had cancer. She finally met a guy name Augustus who shares similar interest with her. From there on she begins to have more communication with Augustus and the relationship begin to develop through the similarity of theirs interest.

Other than similarity, there are some factors that could also affect in building a relationship. According to Feldman (1999), there are several factors that are influencing by friendship just like, they have a similarity, reciprocity of liking, positive individuality, physical form and manners. To build up a good relationship between two people, it is necessary for people to share something in common and no exception could be explained by interpersonal relationship and

social exchange in order to be more specific in the step of building a good relationship.

It emphasizes the importance of the effort in maintaining the relationship between the partners because of the difficulty of facing the cancer. Manne & Badr (2008) stated that Partners or couples especially deal with challenges, such as worry about the likely loss of their life partner and their ability to provide support to the patient. In Manne & Badr (2008) research showed that there are 25 partners who participate and accomplished the surveys, 15 partners out of 25 finished all 5 sessions, and 12 partners out of 25 finished the addition survey. As the results proposed that the participation enhanced patient and partner understanding of the friendship in their relationship and concentrated their pain caused by the cancer.

Besides, just like in any other relationship, people also have a few differences in each of them. Those typical differences were the cause of their relationship incomparability. Those common differences found among them become the great obsession for them to build up their relationship. The researcher was absorbed in learning the connection that happens in mutually the characters especially Hazel and Augustus relation in the story of "*The Fault in Our Stars*" with interpersonal relationship. The theory of Interpersonal Relationship have some points that the researcher is going to discuss about it, they are similarity, reciprocity of liking, positive individuality, and physical form and manners which proposed by Feldman (1999). Meanwhile the social exchange theory, there are also some points that the researcher are going to discuss in this topic, they are complication and hindrance which proposed by Thibaut & Kelley (1959).

One of those sixth well-liked fiction works from John Green that presented throughout January 2012 was “The Fault in Our Stars”. This work of fiction has been the beloved story among those youngsters who are attracted by the relationship happen between the major characters in the story. The story is about a young girl whose have a medical condition called the thyroid Cancer. Hazel is obligatory via her parents to be there at a support group. She moves toward and paying attention to the 17-year-old gentleman, an ex-basketball player. A feature film variation of the novel, Josh Boone as the director, Hazel Grace Lancaster cast by Shailene Woodley, Augustus Waters cast by Ansel Elgort.

To hold up this research, the researcher chose this novel to allow someone observes the psychological relationship entitled “*The Fault in Our Stars*” novel. The researcher resolved the issues with Feldman (1999) theory about the interpersonal relationship and Thibaut & Kelley (1959) theory about social exchange. This novel includes the human’s want in their existence such as love, happiness, friendship, and etc. Nowadays people were in that sort of position where they could achieve with some love and notice from other people. To study this in seriousness, the researcher will come across concerning the complication and hindrance that affect both Hazel and Augustus relationship.

The book was out scheduled on June 6th, 2014. Both the book and its film adaptation were met with strong critical and commercial success. On December 21st, 2011, 1.500 copies of the work of fiction were accidentally shipped by Barnes & Noble Company earlier than the release appointment date to public who have preordered the novel (Green, 2011). The book was ranked #84 on Amazon

website and was also Barnes & Noble bestseller book in June 2011 shortly after the book title was announced (Trachtenberg, 2011). “*The Fault in Our Stars*” debuted at rank #1 taking place the ‘*New York Times*’ Best Seller list for children’s chapter books and remain in the spot for seven weeks (Children’s Chapter Books, 2012). “*The Fault in Our Stars*” in addition gain places on quite a lot of bestseller list. It was ranked #1 on *The Wall Street Journal* bestseller list, ranked #1 on the *Indiebound* bestseller list, and ranked #9 on *The Bookseller* bestseller list. The work of fiction was as well The ‘*New York Times*’ Book appraisal Editor's Choice (Johngreenbooks.com: *The Fault in our Stars*, 2012).

The researcher could see how Hazel and August pleasure each other both in a specific state and terribly with the deadly disease that is hardly can be cured. They accompany and take care of each other in every way and overlook their body lacks as a person with a deadly disease. Those were resemblance of their background as a cancer sufferer which is a deadly disease. Arianto & Ambalegin (2019) stated that the unity between people was defined as love that could maintain their truthfulness and personality. There is a quotation from the novel that could indicate as one of the factors that influencing the relationship.

“Augustus was amazing, but he’d ruined everything at the picnic, right down to the sandwiches that were representationally ringing but felt awful and the learned monologue that disallowed discussion. It all felt Romantic, but not romantic.”(Green, 2012)

The bolded quotation above indicated as one of the interpersonal relationships that happens within Augustus. It shows that Augustus was complimented by Hazel. The statement “Augustus was amazing” was a positive quality of Augustus that was seen by Hazel. Augustus is a warm, incredible, and

easy-going person and a very good listener which makes other people feel comfortable around him. The positive qualities of Augustus were the reason that Hazel began to fall in love with him that make it an unconditional love.

Psychological research has been studied by various people in a variety of points of view. The first previous research which was written by Nesari, Shahrazad, Filinezhad, & Nesari (2011) in the *Procedia* journal with Scopus indexed under the title "A Study of The Lack of Identity in Luigi Pirandello's Six Characters in Search of an Author and Henry IV". In this journal, Nesari analyzed the concept of "self" and "identity" with the theory of Archetypes which was proposed by Carl Gustav Jung. Secondly, the previous research which was written by Goh & Arianto (2019) in *Jurnal Basis* with Sinta 4 indexed under the title "An Effect of Psychological Conflict to Elsa Personality Development in Frozen: Psychological Approach". In this journal, Goh focused on analyzing Elsa character development and the conflict that happened around Elsa. Goh used the theory of Kurt Lewin to analyze the psychological conflict and the theory of Elizabeth B. Hurlock to analyze the personality development.

This research is different from both articles above. This research tried to reveal the interpersonal relationship that could be found in both Hazel and Augustus and the social exchange of Thibaut & Kelley (1959) theory that reflected in the relationship between Hazel and Augustus. This research was chosen for two reasons. Foremost, "*The Fault in Our Stars*" novel has an enormous story about a relationship that reflected in the main characters' life and to

know how the theories of Thibaut & Kelly and Robert S. Feldman are reflected in the Hazel and Augustus.

1.2 Identification of the Problem

According to Ratna (2012), identification of the problem is the approach to discover the entire problem which occur from the surroundings. Pass on to the background of the research, the researcher constructs several problems that are able to be acknowledged such as:

1. The types of interpersonal relationship in “The Fault in our Stars” novel.
2. The types of social exchange in “The Fault in our Stars” novel.
3. How does interpersonal affect the character of Hazel.
4. How does the social exchange affect the character of Hazel.
5. The impact of interpersonal relationship towards social exchange in “The Fault in our Stars” novel.

1.3 Limitation of the Problem

Based on the problems above, the researcher limits this research into two categories, they are;

1. The types of interpersonal relationship factors influencing Hazel and Augustus friendship in “The Fault in our Stars” novel.
2. The types of Social exchange found in Hazel and Augustus character in “The Fault in our Stars” novel.

1.4 Formulation of the Problem

The researcher formulates the main problems to be answered as stated in the following research questions:

1. What are the types of interpersonal relationship factors influencing Hazel and Augustus friendship in “The Fault in our Stars” novel?
2. What are the types of social exchange found in the character of Hazel and Augustus in the “The Fault in our Stars” novel?

1.5 The Objective of the Research

In this research, the researcher found some objective of why the researcher does this research:

1. To find out the types of interpersonal relationship factors that influencing Hazel and Augustus friendship in “The Fault in our Stars” novel.
2. To find out the types of social exchange found in Hazel and Augustus character in “The Fault in our Stars” novel.

1.6 The Significance of the Research

1. Theoretically

This research would have some various intentions in doing the research. First, this research is anticipated and expected to present extra information for the reader about the Interpersonal Relationship and Social Exchange in term of psychology. Second, this research is as well anticipated to develop the researcher knowledge, understanding as well as in the compliance of the materials within a science research, particularly concerning the researcher knowledge of psychological aspects. The last, this research will turn out to be an evaluation for future research.

2. Practically

This research is also expecting to be a valuable research for the particular person in conducting a research. First, this research contributes the knowledge to people about English language and literature especially in psychology. Second, this research is likely to give a further contribution to the researcher in describing the phenomena of psychology that mostly happen in the world of fiction. This research in addition gives suggestion to the readers who would like to be on familiar terms with the type and motivation for choosing the Interpersonal relationship and social exchange theory.

1.7 Definition of Key Terms

Interpersonal Relationship : A contribution of a person to a well and great relationship with one after another through an internal factors within a person themselves.
(Feldman, 1999)

Social Exchange : A contribution of a relationship within a person in order to build a better relationship with one another through the external factors.
(Thibaut & Kelley, 1959)

Psychological Approach : Psychology, broadly defined, is the scientific study of behavior, both external observable action and internal thought.(Wellek & Warren, 1963)

CHAPTER II
REVIEW OF RELATED LITERATURE AND THEORETICAL
FRAMEWORK

2.1 Psychological Approach

Literature is a product of human thought. It can be influenced by the environment of the author; even it may contain the author's way of life. Whilst, most people consider that literary works are mirror of human life. In other words, literary works are used by authors for telling what they feel and see and what they face in the social life involving human activities. Literary works are known by people in the written form, those are novel, poetry, and also play (Wellek & Warren, 1963)

Psychology and literature have deep connection in human life. Both deals with the human behaviors, expression, thought, and motivation. Wellek & Warren (1963) stated that Psychology, broadly defined, is the scientific study of behavior, both external observable action and internal thought. Psychology can be used to explore and explain things and phenomena of human life by applying the principle of psychology in the literary work. For some conscious artist, psychology may have tightened their sense of reality, sharpened their powers of observation or allowed them to fall into hitherto undiscovered patterns. However, psychology is only preparatory to the act of creation, and in the work itself, psychological truth is an artistic value only if it enhances coherence complexity, in short; it is art (Wellek & Warren, 1963).

Psychological approach reflects the effect that modern psychology has had upon both literature and literary criticism. Fundamental figures in psychological criticism include Sigmund Freud, whose psychoanalytic theories changed our notions of human behavior by exploring new or controversial areas like wish-fulfillment, sexuality, the unconscious, and repression as well as expanding our understanding of how language and symbols operate by demonstrating their ability to reflect unconscious fears or desires. The psychological approach leads most directly to the substantial amplification of the meaning of literary works. Discussing psychology and its place in literary works, is studying the author's imagination. Since all literary works are based on some kind of experience, and since all writers are human, we need to be caught up in a wide spectrum of emotional problems (caused by experience). Not all psychological paths in the analysis of literary works are done to arrive at the understanding of literary works, to some extent.

2.2 Interpersonal Relationship

One of the studies about the relationship among many theories of psychology in which the researcher used was the interpersonal relationship. The theory itself is all meant to be described in the character between Hazel and August as the major characters in "*The Fault in Our Stars*" novel. The researcher would be by means of using the Interpersonal Relationship as one of the tools to support the research and evaluate it in the term of the major characters friendship. Interpersonal relationship theory was actually referred to an extremely strong

connection among those individuals in the midst of similar taste, ambition and happiness in lifetime.

Feldman (1999) stated that It is necessary for individual character to contribute themselves to a well and great relationship with one after another, not by only for the faster delivery of outcome but also for a kind of positive ambience at the workplace. Interpersonal Relationship consists of some Social Psychology themes as one part of it as the theory. Feldman (1999) stated that Social Psychology that is a knowledge which is learning about the authority of our circumstances with some particular kind of concentration to how the researcher outlook and influence one another. Particularly it means that influencing and communicating to each other was the term of building a relationship

Feldman (1999) stated that in the study of Social Psychology which stated that social psychologists are attempting on perceiving beneath and the immense distinction within the human relationships to determine common principles that concern too many relationships. An important attribute of numerous relationships was that the two people persuaded one another or in further technically terms that they are likely mutually dependent person.

2.2.1 The Factor Influencing Friendship

According to Feldman (1999), Social Psychology theories, studies, and some claims from the expert, there are four factors that could be indicated from the underlying interpersonal attraction which are similarities, reciprocity of liking, positive individuality, and physical form and social manners.

2.2.1.1 Similarity

Similarities are one of the things which manipulates the friendship that can be found in anyone. Most of the dyads were based on similarities. It was because first, similarities are slightly to be more straightforwardly reinforced. Second, the facts that somebody else had the manner or behavior which are similar to our own which may perhaps show the way to wisdom of authorization of our vision of the world.

In an experimentation in which Donn Byrne and his social group captured the real meaning of Laura's experience. In addition, they establish that the more someone's attitudes related to your own, the more people are going to found out how likeable the person is. The resemblance formed the fondness not only for the college students but also for the kids and the elderly, for people which has a different profession, and for those people who are in a different tradition. This is particularly for those people who are pleased with themselves for what they have. If people are somehow very fond of yourself, people are expected to have partnered with someone who looks like you.

2.2.1.2 Reciprocity of Liking

As what the researcher have declared earlier in the statement above, there are some vigorous common finding on the subject about the reciprocity of liking: somebody who are likely to like those people who are fond of him or her. Given the information in which there are an additional character that might be fond of him or her, someone that are likely to be fascinated to that one person. Feldman (1999) stated that the communicate method seemed to hold a true motive as well

as when there exist to be someone who is fond of other persons existence, he or she is likely to be taken for granted that they are whether like him or her in return. The feeling and emotion of liking someone was not forever revealed by how the words convey straightly to the point to someone. It could be proved that it is not directly go throughout the manners.

2.2.1.3 Positive Individuality

Feldman (1999) stated that it was somehow barely shocking that some people with praiseworthy and a admirable character should be liked by other people more than those with unlikable and horrible qualities. For example, a person like clever or smart, warm, honest or frank, and capable people a lot more than those people who do not really have that kinds of qualities within themselves. Otherwise his or her positivity was not the whole story of themselves. these days he or she prefer some people who always show positive behavior or manner that are a bit flawed by negative vibes over those people who are seems to be without imperfection in themselves.

There are some example of this which was meant to be made available in a study or analyzing by some expert. Elliot, Ben, & Joanne (1966) stated that the person who have had both a very capable, talented and also an average personality entrust or not entrust a pratfall in which it consisted of awkwardly spill that have been accidently make out of a cup of tea. The outcome was showing that the liking for the experienced person improved after an accident and awkwardly pratfall, whereas liking will be likely to reducing for the average or a normal person. (Myers, 2005) states that the clarification made was simple

and there are very experienced people who are somehow gave a mistake to become more and more human, sociable and more attractive. in contrast, there are some average person who have achieved a little from their mistake they have made, since they already have been seen as a human enough.

Even though later in the research, it is going to be revealed that relationship about both capability and attractiveness of someone is well correlated to the self-esteem of the person who are doing the evaluation of themselves. The basic fact remains, and the researcher are likely to have a preference on the competent and capable people to an incompetent one to be precisely.

2.2.1.4 Physical Form and Manners

Feldman (1999) declared that even if all the data are concerning about the connection between desirability and physical form, they are also obviously pretty much encouraging and the question of how the appearance was associated to the subsequent performance was unclear. the researcher might be also expecting a lot about that in fact usually people are likely to shape imprecisely. the researcher might be looking forward to that that kind of issue since people who are usually tend to form more constructive impersonation about the physically attractiveness. According to Feldman (1999) they might going to do something more encouraging self-images and interpersonal style for themselves, in which it could direct them to build up and self-improvement into a more functional way throughout the social connections than a smaller amount of people would do. Following by this way of thinking, the researcher may possibly be expecting

more and more physically attractive people to have a larger number of improvement and more satisfying social encounters in the social life.

There are a great amount of data that had been composed which are concerning all about the social encounter of the physically attractive in a person, the outcome also have already been in the circumstance of dating behavior and it also had been somewhat a very reliable result, in which it is showing that most of the good-looking people were chosen as dating partners more often than those who are less good-looking people. Moreover, self-reports of attractiveness are basically associated with only those people who have the good looks.

The factors of the interpersonal relationship theory offer by Feldman (1999) will be exposed or showing about the connection of the major characters particularly about the factor underlying friendship that could be found within the people nowadays. Followed by its factors in which it will be supported by the social exchange theory proposed by Thibaut & Kelley (1959) to discover the problem and hindrance.

2.3 Social Exchange

Thibaut & Kelley (1959) stated that the most significant and important point of view of the social relationships are from the external factors. The cause from the external factors can be through the experience where one or two parties faced. Those factors are to make a relationship last longer through those experience. Thibaut & Kelley (1959) were the first one who made this theory in 1959 in order to introduce the Social exchange theory. The point of view of this theory was evaluating the model of relations among partners through the external

factors. There is one way on conceptualizing these kinds of connections is within the circumstances of the problem and hindrance. Thibaut & Kelley (1959) stated that there are two kinds of fundamentals for this theory which is very important; they are complication and hindrance.

2.3.1 Complication

Thibaut & Kelley (1959) stated that by complication, a relationship could grow through some experience by the external cause or problem that affect a person. The cause or problem may be affected by family, friends, an object or the environment. The complication is usually come unexpectedly and therefore it became a test for a person to overcome it by themselves. In addition, through problem, everything or anything that a person involves, it could strengthen the will to overcome it.

2.3.2 Hindrance

Thibaut & Kelley (1959) stated that by hindrance, people that tried to interfere or get in the way of a person who tried to do something. As a result, hindrance could make a huge impact for individuals to overcoming a relationship problem. The larger the prevention on someone who wanted to performing a certain act, the bigger the inhibition of the character has to win over. Thibaut & Kelley (1959) stated that although the interaction may be valuable in the term of communication and connection, it surely will need a huge amount of time and energy to achieve it, so that it require much argument with other people, or it might be cause of other people objection to the relationship and disapproval of us for being mixed up in it. Meanwhile There will always be issues every day in a

long term relationship. When there's an problem, people either let it define them, let it destroy them or allow it to strengthen them both physically or mentally.

2.4 Previous Research

The first previous research which was written by Nesari, Shahraz, Filinezhad, & Nesari (2011) in the *Procedia* journal with Scopus indexed under the title "A Study of The Lack of Identity in Luigi Pirandello's Six Characters in Search of an Author and Henry IV". In this journal, Nesari analyzed the concept of "self" and "identity" with the theory of Archetypes which proposed by Carl Gustav Jung. In this study, Nesari that the concept of "self" and identity" are the concept that have lost and unachievable in human beings and emphasized that people are wearing "mask" in order to hide their identities. As a process of "individuation" and "archetypes" shows that every people could achieve their "self" and "identity" through the theory of archetype. The difference in this study is Nesari raised and focused on the concept of the "self" and "identity" using the theory of Archetypes by Carl Gustav Jung meanwhile the researcher focused on analyzing interpersonal relationships and social exchange as a form of one's efforts to self-actualize.

The second previous research which was written by Zabihzadeh, Hashim, & M. M. (2017) in the *3L: The southeast Asian Journal of English Language Studies* with Scopus indexed under the title "Woman and Psychological Trauma of 9/11 in Amy Waldman's *The Submission*". In this journal, Zabihzadeh analyzed the psychological trauma found in the character of the story support with the theory of Wilson & Keane and Caruth. Zabihzadeh seeks to explore Waldman's perception

on the process of healing from the tragedy and psychological trauma happened in the character of the story. Zabihzadeh found that the novel does not only portray the trauma of the character but also the process of the recovery and overcoming the incident that happened within the character. The difference in this research is Zabihzadeh focused on the psychological trauma meanwhile the researcher analyzed the interpersonal relationship and social exchange.

The third previous research which was written by Ibarrola (2014) in the IJES journal with Scopus indexed under the title “The Challenge of Recovering from Individual and Cultural Trauma in Toni Morrison’s Home”. In this journal, Ibarrola analyzed Frank Money by using a psychological trauma theory proposed by Anne Whitehead. Ibarrola found that there is psychological trauma happened in the character of Frank Money through some hateful childhood memories, his participation in the Korean war, the failure to support the woman he loves, and the racism that he still experiences in the U.S. of the 1950s. Ibarrola used qualitative method to analyzed the data in the novel of Toni Morrison’s Home. The research that researcher do is certainly different from the research written by Ibarrola. The researcher focused on analyzing interpersonal relationships and social exchange while Ibarrola showed more forms of trauma.

The fourth previous research which was written by Madsen (2013) in the IJES journal with Scopus indexed under the title “Remember...Whose girl you are: Dynamics of Domination in Sarah Waters’ Affinity (1999)”. In this journal, Madsen analyzed Sarah Water through Jessica Benjamin’s theory as the representation of feminist psychoanalytic. With the psychological aspect in the

novel, Madsen focused on analyzing the dynamic of domination and submission which characterizes the female couple in the novel. Through the theory of Benjamin's, it gives a valuable insight into the psychological structure of erotic hierarchy and understanding a new way to open up to an erotic desire and power dynamic between man and woman. Madsen used qualitative method to analyze the novel and the research that the researcher do is certainly difference from Madsen research. The researcher focused on the interpersonal relationship and social exchange meanwhile Madsen focused on analyzing the intersubjective perspective of the character in the novel that misbehaves both Victorian boundaries and persist in contemporary culture reflected in the novel.

The fifth previous research was written by Marwan, Nuryatin, & Doyin (2019) in the *Seloka Journal* with Sinta 3 indexed under the title "Women's Psychic Violence in the Buru Island Tetralogy by Pramoedya Ananta Toer". In the journal, Marwan analyzed Pramoedya Ananta Toer's Tetralogy Buru Island by using a feminist psychoanalysis theory by Muashomah. Marwan found that the psychological violence in the novel included sexual violence in the form of sexual abuse against Annelies, sexual violence against Nyai Ontosoroh, Annelies, and Maiko, and economic violence against Nyai Ontosoroh. all psychological violence causes psychiatric symptoms including hysterical, traumatic, and depression. Marwan used qualitative methods and heuristic and hermeneutic for the data collection techniques. The research that researcher do is certainly different from the research written by Marwan. The researcher focused on analyzing interpersonal relationships and social exchange as a form of one's efforts to self-

actualize while Marwan showed more forms of psychiatric symptoms as an effect of psychological violence.

The sixth previous research which was written by Nugraha, Wardhani, & Rakhmawati (2019) in the ILEAL journal with Sinta 3 indexed under the title “The characteristic of the main character in Kinanti novel by Margareth Widhy Pratiwi”. In this journal, Nugraha analyzed the main character personality with the theory of Sigmund Freud. Nugraha found that Kinanti, the main character in the novel has three kinds of characters, they are, selfhood, inner attitude, and looking for a true teacher. Nugraha used qualitative descriptive in his research and the data collection technique used in his research were refer to note-taking, and interview techniques. The research that the researcher do is certainly different from the research written by Nugraha. The researcher focused on analyzing the interpersonal relationship and social exchange, meanwhile Nugraha focused on analyzing the personality of the main character base on the theory of Sigmund Freud.

The seventh previous research which was written by Goh & Arianto (2019) in Jurnal Basis with Sinta 4 indexed under the title “An Effect of Psychological Conflict to Elsa Personality Development in Frozen: Psychological Approach”. In this journal, Goh focused on analyzing Elsa character development and the conflict happened around Elsa. Goh used the theory of Kurt Lewin to analyze the psychological conflict and theory of Elizabeth B. Hurlock to analyze the personality development. Goh found that there are two kind of conflict that could give a huge impact on Elsa character development they are, approach-avoidance

conflict and avoidance-avoidance conflict. Goh also found 5 kinds of determinants in Elsa, they are emotional, aspiration and achievement, intellectual, social, and family. The difference in this study is Goh focused on the psychological conflict and personality development of Elsa meanwhile the researcher uses interpersonal relationship and social exchange theory. To some extent, this research could give the researcher some idea and concept about the psychological view.

The eight previous research which was written by Abshavi & Ghanbarpour (2019) in the IJLLT journal with google scholar indexed under the title “Gender Performativity: A Feminist Reading of *Life after Life* by Kate Atkinson”. In this journal, Abshavi analyzed the Gender performativity with the theory offered by Butler relating to how one's psychological attitude is formed both biologically and psychologically so that it shapes one's personality in acting. The form of action displayed by the characters in the novel, *Kate Atkinson* is an identity that cannot be separated from the psychological influence that shapes it. Someone can perform their identity depend on the dominant frighten in their psychological performance it could be a man or a woman. The difference in this study and the researcher study is Abshavi raised about gender identity in the feminist framework of psychoanalysis using Judith Butler's theory. To some extent, this journal provides sufficient development of ideas in the researcher's writing because psychological factors can also shape someone performativity.

The ninth previous research which was written by Nawaz (2019) in the IJELS journal with google scholar indexed under the title “Camouflage Personae: A Case Study of Bapsi Sidhwa's *The Pakistani Bride*”. In this journal, Nawaz

focused and explored the kinds of defense mechanism that are used in the character in the novel by using the theory of Sigmund Freud. Nawaz found that Ziatoon use defense mechanism and show the moral anxiety due to the family background. She presents a certain example on how she faces conflict and frustration toward the society and because of the rationalization, she could defeat the anxiety and experience new things and get to know new people. In this research, Nawaz used qualitative descriptive method on his research. The difference in this study and the researcher study is Nawaz analyzed about the defense mechanism using the theory of Sigmund Freud.

2.5 Theoretical Framework

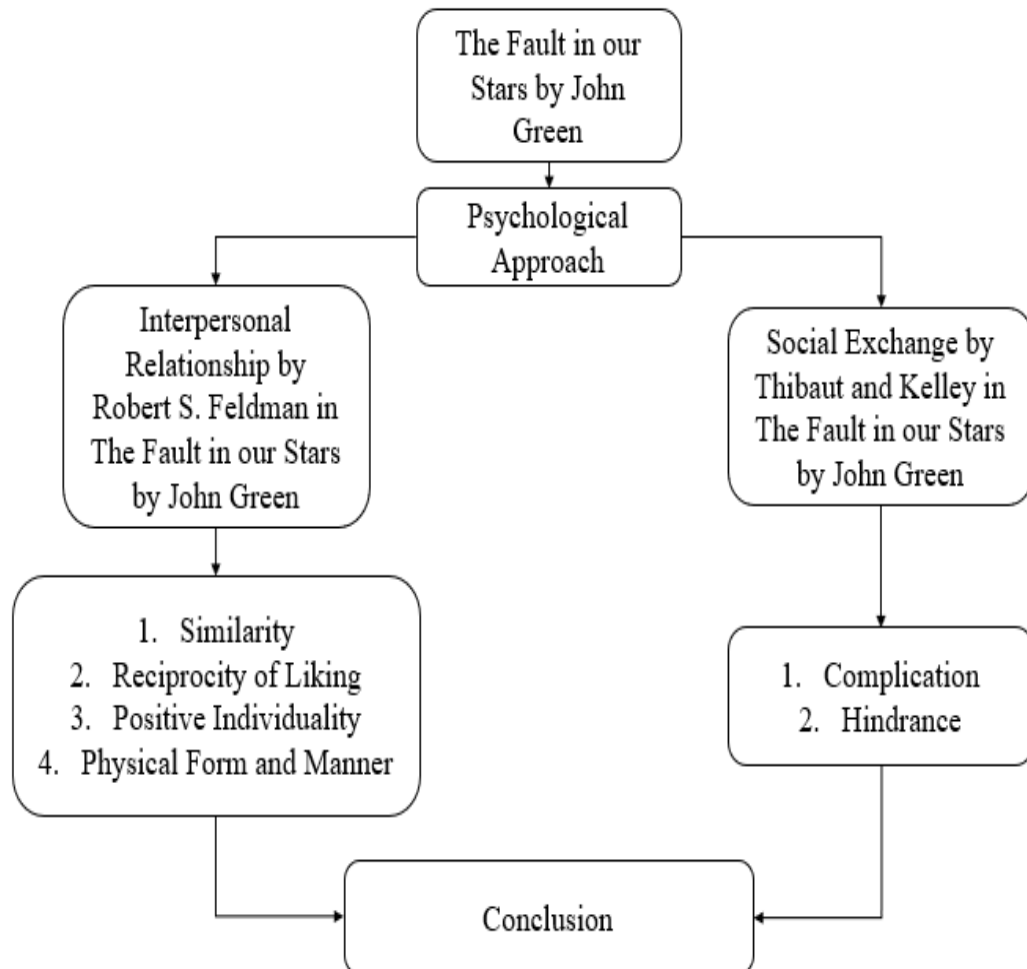


Figure 2.1. Theoretical Framework

CHAPTER III

RESEARCH METHODOLOGY

In this chapter, According to Ratna (2012), research method may be possibly be understood as the knowledge of learning the technique research in which it finished systematically by means to resolve the problem of the research. The method in gathering the data, to inspect, method of evaluates the data and the method of presenting the outcome of analysis was also demonstrated in this process in which it manipulates the research.

3.1 Research Design

Ratna (2012) stated that qualitative research is a research which contains natural data review in a literary work and involves elements of culture. The method used in this research was the qualitative method. Theoretically, there were two kinds of research design that the researcher could found in any kind of thesis; they were quantitative and also qualitative research, but in this research, the researcher focused on the qualitative method. While in the qualitative research, usually it focused on producing a descriptive data in which the structure of words written or spoken of the individual could be obtain from book, novel, movie and any kind of object that related to literature study. In conducting this research, the researcher used qualitative research which was mostly about descriptive method and it was useful and practical to analyze the type of interpersonal relationship and the social exchange of both Hazel and Augustus in "*The Fault in Our Stars*" novel.

3.2 Object of the Research

The object of the research is very important and necessary to carry out a research in order to obtain a result in which people could use it for further research and the understanding of the term used by the researcher. The researcher has to be smart in order to decide which kind of object has to be used in this research. In this research, the object was the interpersonal relationship and social exchange of Hazel and Augustus found in “*The Fault in Our Stars*” novel. Then, the data were all the text that related to interpersonal relationship and social exchange which is written in “*The Fault in Our Stars*” novel.

3.3 Method of Collecting Data

Ratna (2012) stated that content analysis in literary works is messages which themselves are in accordance with the nature of literature. This data collection method is compatible for this research because the primary data source of this research is novel. The research will make a note that contains the data which are gathered from the data source. The step that used by the researcher in collecting the data were:

- a. Chose the source which was a novel.
- b. Read and understand the novel.
- c. Find some journals and theories from expert which had the relation to the research topic.
- d. Collecting the data which related to the research problems.
- e. Lastly categorized the data accordingly.

3.4 Method of Analyzing Data

In the method of analyzing data, Ratna (2012) stated that the method that used to analyze data has the purpose to give explanation about the suggestion between literary work and theory. Therefore, another purpose was to motivate or modify the idea of the researcher. The researcher applied and used interpersonal relationship theory proposed by Feldman (1999) to analyzed the concept of internal factor underlying friendship between Hazel and Augustus and social exchange theory proposed by Thibaut & Kelley (1959) to analyzed the concept of external factors on both Hazel and Augustus relationship that reflected in "*The Fault in Our Stars*" novel. The steps that the researcher used to analyze the data were

- a. Review the data that have been collected.
- b. Classified the data that related to the research problem.
- c. Analyzed the data based on the theory.
- d. Lastly draw a conclusion after the data have been analyzed.