

**AN ANALYSIS OF POWER RELATION ON DONALD  
TRUMP INTERVIEW FROM THE FACE OF NATION: A  
DISCOURSE ANALYSIS**

**THESIS**



**By:  
Willy Sitanggang  
161210088**

**DEPARTMENT OF ENGLISH LITARATURE  
FACULTY OF SOCIAL SCIENCES AND HUMANITIES  
PUTERA BATAM UNIVERSITY  
2023**

**AN ANALYSIS OF POWER RELATION ON DONALD  
TRUMP INTERVIEW FROM THE FACE OF NATION: A  
DISCOURSE ANALYSIS**

**THESIS**

**Submitted in partial fulfillment of the requirement for the degree of  
Undergraduate(S1)**



**By:  
WILLY SITANGGANG  
161210088**

**DEPARTMENT OF ENGLISH LITARATURE  
FACULTY OF SOCIAL SCIENCES AND HUMANITIES  
PUTERA BATAM UNIVERSITY  
2023**

## SURAT PENYATAAN ORISINALITAS

Yang bertandatangan dibawah ini saya:

Nama : Willy Sitanggang  
NPM : 161210088  
Fakultas : Ilmu Sosial & Humaniora  
Program Studi : Sastra Inggris

Menyatakan bahwa skripsi yang saya buat dengan judul:

**An analysis of power relation on Donald Trump interview from the face of nation: A discourse analysis”.**

Adalah hasil karya sendiri dan bukan duplikasi dari karya orang lain. Sepengetahuan saya, didalam naskah skripsi ini tidak terdapat karya ilmiah atau pendapat yang pernah ditulis atau diterbitkan orang lain, kecuali yang secara tertulis dikutip di dalam naskah ini disebutkan dalam sumber kutipan dan daftar pustaka.

Apabila ternyata didalam naskah skripsi ini terdapat bukti serta unsur-unsur plagiarasi, saya bersedia naskah skripsi ini digugurkan dan gelar strata satu (S1) yang saya peroleh dibatalkan, serta diproses sesuai dengan peraturan perundang-undangan yang berlaku.

Demikian pernyataan ini saya buat dengan sebenarnya tanpa ada paksaan dari siapapun.

Batam, 28<sup>th</sup> January 2023



**WILLY SITANGGANG**  
**161210088**

## **DECLARATION OF THE THESIS ORIGINALITY**

**I, Willy Sitanggang, NPM 161210088**

**Here with declare that the thesis entitled**

**AN ANALYSIS OF POWER RELATION ON DONALD TRUMP INTERVIEW  
FROM THE FACE OF NATION: A DISCOURSE ANALYSIS**

**Is the real work of myself and I realize that the thesis has never been  
publish in other media before, partially or entirely in the name of mine or other.**

**Batam, 28<sup>th</sup> January 2023**



**WILLY SITANGGANG**

**161210088**

**AN ANALYSIS OF POWER RELATION ON DONALD  
TRUMP INTERVIEW FROM THE FACE OF NATION: A  
DISCOURSE ANALYSIS**

**THESIS**

**Submitted in partial fulfillment of the requirement for the degree of Sarjana  
Sastra (S1)**

**By:  
WILLY SITANGGANG  
161210088**

**The thesis has been approved to be examined on the date as indicate below**

**Batam, 28<sup>th</sup> January 2023**



**Afriana, S.S.,M.Pd.  
Supervisor**

## **ABSTRACT**

The analysis and discussion of discourse analysis are the subjects of this thesis. A discourse theory of power relations will be applied. The focus of this study focuses on Donald Trump's statements made during an interview that was broadcast on national television during his presidential and vice presidential campaigns. The aim of the study is to describe the utterances and speech patterns used by Donald Trump during the interview. The qualitative method will be used in this study. The observation method, which involves employing note-taking techniques to record every utterance made during the interview, is to be used. Data analysis will be done using a matching procedure that takes into account the dispute's history. Researchers present data in their work. The data analysis phase of the data presentation process is the researcher's attempt to address the issues directly included in the data. As this research method is qualitative, data collection uses the observation method that The examiner serves as the primary instrument in qualitative research methods, which are based on failsafe post-positivism and used to examine the conditions of natural objects. The results of qualitative methods place a greater emphasis on meaning than generalization methods because researchers use words to present their data.

Keywords: Discourse analysis, critical discourse, power relation.

## **ABSTRAK**

Analisis dan pembahasan analisis wacana menjadi pokok bahasan tesis ini. Sebuah teori wacana hubungan kekuasaan akan diterapkan. Fokus penelitian ini berfokus pada pernyataan-pernyataan Donald Trump saat wawancara yang disiarkan di televisi nasional selama masa kampanye presiden dan wakil presidennya. Tujuan dari penelitian ini adalah untuk mendeskripsikan ucapan dan pola bicara yang digunakan oleh Donald Trump selama wawancara. Metode kualitatif akan digunakan dalam penelitian ini. Metode observasi, yang melibatkan penggunaan teknik mencatat untuk merekam setiap ucapan yang dibuat selama wawancara, akan digunakan. Analisis data akan dilakukan dengan menggunakan prosedur pencocokan yang memperhitungkan riwayat sengketa. Peneliti mempresentasikan data dalam pekerjaan mereka. Tahap analisis data dari proses penyajian data adalah upaya peneliti untuk mengatasi masalah secara langsung termasuk dalam data. Karena metode penelitian ini adalah kualitatif, maka pengumpulan data menggunakan metode observasi yang Pemeriksa berfungsi sebagai instrumen utama dalam metode penelitian kualitatif, yang didasarkan pada post-positivisme yang gagal dan digunakan untuk memeriksa kondisi objek alami. Hasil metode kualitatif lebih menekankan pada makna daripada metode generalisasi karena peneliti menggunakan kata-kata untuk menyajikan datanya.

**Keywords:** Discourse analysis, critical discourse, power relation.

## ACKNOWLEDGMENTS

All praise to God almighty the lord is merciful and compassionate researcher who had completed this thesis entitled "An analysis of power relation on Donald Trump interview from the face of nation: A discourse analysis "from The Face of Nation: discourse analysis approach". This research is one of the requirements to complete the bachelor degree of English Literature at the Putera Batam University.

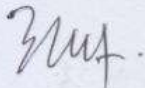
The researcher realizes that this thesis is still far from perfect. Therefore, the researcher will always welcome criticism and suggestions. With all the limitations, the researcher realizes that this thesis would not be possible without the help, guidance and encouragement from various parties. The researcher would like to say thank, to my beloved father and mother for the love inspiring and blessing given her endlessly in taking the bachelor degree. The researcher want to express her gratitude and appreciation to Ms. Afriana, S.S.,M.Pd. as advisor who had contributed, ideas and taking the time for this thesis.

Furthermore, the researcher would like to express sincerely gratitude to all people who involve both directly and indirectly especially to:

1. Dr. Nur Elfi Husda, S.Kom.,M.SI., Rector Of Putera Batam University
2. Dr. Michael Jibrael Rorong, S.T.,M.I.Kom., Dean Of Faculty Of Social Sciences & Humanities Of Putera Batam Univerity
3. Nurma Dhona Handayani, S.Pd., M.Pd. as Head Of Department Of English Literature Of Putera Batam University.
4. Afriana, S.S.,M.Pd. as supervisor and advisor for giving knowledge, motivation and suggestion during the study at putra batam univetsity.
5. All Lecturers of Department of English Literature, for their knowledge, motivation and suggestion during my research at Putera Batam University
6. All my friends at Putera Batam University

May God repay the kindness and always provide grace and mercy, Amen.

Batam, 28<sup>th</sup> January 2023



Willy Sitanggang  
161210088



## TABLE OF CONTENT

<b>COVER</b> .....	<b>i</b>
<b>TITLE</b> .....	<b>ii</b>
<b>SURAT PENYATAAN ORISINALITAS</b> .....	<b>iii</b>
<b>DECLARATION OF THE THESIS ORIGINALITY</b> .....	<b>iv</b>
<b>APPROVAL PAGE</b> .....	<b>v</b>
<b>ABSTRACT</b> .....	<b>vi</b>
<b>ABSTRAK</b> .....	<b>vii</b>
<b>ACKNOWLEDGMENTS</b> .....	<b>viii</b>
<b>TABLE OF CONTENT</b> .....	<b>ix</b>
<b>CHAPTER I</b> .....	<b>1</b>
1.1. Background of the Research .....	1
1.2. Identification of the Problem.....	4
1.3. Limitation of the Problem .....	5
1.4. Formulation of the Problem .....	5
1.5. Objective of the Research .....	6
1.6. Significance of the Research .....	6
1.7. Definition of Key Term.....	6
<b>CHAPTER II</b> .....	<b>8</b>
2.1. Critical Discourse Analysis(CDA) .....	8
2.2. Language and Power.....	9
2.3. Power in Discourse .....	10
2.4. Power Relation .....	11
2.4.1. Pronoun .....	12
2.4.2. interruption .....	13
2.4.3. Enforcing explicitness.....	14
2.4.4. Controlling Topic .....	14
2.4.5. The Functions of power relation.....	15
2.4.6. Previous Research.....	15
2.4.7. THEORITICAL FRAMEWORK.....	23
<b>CHAPTER III</b> .....	<b>24</b>
3.1. Research design .....	24
3.2. Object of the research .....	25
3.3. Method of Collecting Data .....	25

3.4. Method of Analyzing Data .....	26
<b>CHAPTER IV .....</b>	<b>28</b>
4.1. Research Analysis. ....	28
4.1.1 PRONOUN .....	29
4.1.2. Interruption .....	39
4.1.3. Enforcing Explicitness.....	45
4.1.4. Controlling Topic .....	48
4.2. Discussion.....	56
<b>CHAPTER V.....</b>	<b>60</b>
5.1. Conclusion .....	60
5.2. Suggestion .....	61
<b>REFERENCES .....</b>	<b>62</b>
<b>APPENDICES.....</b>	<b>64</b>
<b>CURRICULUM VITAE.....</b>	<b>71</b>

# CHAPTER I

## INTRODUCTION

### 1.1. Background of the Research

Since the time of the ancient Greeks, when the conflict in power relations first emerged, one of the main primary topics in politics has been how to balance power. At that time, it was no longer a question of whether a character was wise or not; rather, it was about whether the fact and the speech they made were the energy itself. One person, an organization, or intuition in some areas can claim the power in its entirety. According to Fairclough, (1992) power cannot be wholly and unquestionably attributed to any one person or social group. Therefore, it might be altered by considering the circumstances and settings. According to the aforementioned assertion, family members play a significant role in politics, and many people attempt to have disagreements while still speaking politely.

According to Saito, the prior work of critical Discourse Analysis that concentrated on power relations (2011). Their investigation examined the interpersonal behaviors of Japanese male superiors in conflictual conversation. Seven male managers from a dental laboratory in the Tokyo area that creates dentistry products including crowns and dentures, and employs 59 people overall were the only

ones they examined in terms of power relations (forty nine men and 10 women).

Three departments and management are part of the business.:

well-known productions, sales, and affairs. All of the people in positions of authority are male. Employees recall their place of work as a firm rather than a group of relatives' business, despite the fact that the employer is small. The analysis's conclusion is that male superiors intentionally manipulate linguistic sources that may be connected to both stereotypically masculine and feminine interactional styles in order to persuade subordinates to accomplish institutional goals and maintain healthy working relationships. The energy relation controversy in politics, in particular in political interviews, is the basis for this study.

Muqit, (2012), who examined ideology and power relations and pondered the use of the pronoun in Osama Bin Laden's speech text, fulfilled every other observation. Their research focused most effectively on Osama Bin Laden's use of pronouns to demonstrate his ideology and power relation. They found that Osama Bin Laden's ideas were influenced by political ideology, which covered the motivation for the attack on the United States, and religious ideology, which covered the fundamental conviction and the duty of the believer. the governmental structure of the United States and the purpose of the American forces stationed in the Middle East. In addition, Osama's power relationships with God, America, and other Muslims are all related to his relationship with them. It will probably differ from the research that has already been done.

The interview's research on discourse analysis could be very important because many words and phrases are conceivable with their true meanings, which could lead to misunderstandings or unfamiliarity with the utterances heard there. Additionally, communication in social and everyday life is much more dangerous because it can result in conflicts that result in misunderstandings. The goal of this research is to eliminate language-related misunderstandings, particularly those using previously spoken words.

President of the United States Donald Trump was interviewed for this study, and as a result, it is able to demonstrate how power relations are expressed. In order to uncover any potential power relationships implied in Donald Trump's statements, the researcher focused on the use of pronouns in the transcription of his spoken interview. He also used Fairclough's theory of power in discourse to explain how the effective participant controls the contribution of another participant who is less powerful.

The purpose of this research is to provide answers. First, based on the pronouns and phrases he uses in his interview videos, what kind of power relationship is Donald Trump using? , Second, how will the participant respond to or assume control over matters involving power relations? The researcher made an effort to identify the type of power relationship that Donald J. Trump used during his interview in order to answer the major question. In addition, the researcher tried to determine how the dominant person in the interview controls the less successful

participant in the second question. In the areas of the Trump interview that dealt with power relations, the researcher looked at utterances. This study is extensive because it explains and summarizes the facts from the Donald J. Trump and the host anchors' interview video. Because the interview is conducted on a unique topic at some time, it has the potential to uncover a particular strategy of power relation.

According to the descriptions given above, the researchers are interested in using the interview footage to undertake crucial discourse analysis for their research. The terminology used in the interview are those used by politicians, however employing them for the sake of adopting polite language in an interview could affect someone's level of understanding if they are unfamiliar with the issue at hand. Studies on the discourse analysis of the Donald Trump interview are therefore seen as essential to achieving this goal since those who lack familiarity or prior knowledge are unable to interpret the usage of utterances and sentences in social life. The researcher wants to undertake the studies on critical discourse evaluation contained in the interview with the title as a result of the information above, AN ANALYSIS OF POWER RELATION ON DONALD TRUMP INTERVIEW FROM THE FACE OF NATION: A DISCOURSE ANALYSIS.

## **1.2. Identification of the Problem**

Based on the description described above, the problems that can be identified are as follows:

1. The Strategy of power relation on why Donald Trump using power relation on his pronounces and sentence.
2. The meanings of power relation contained in the term of language base on political point of view as a power relation.
3. The functions of power relation in the political point of view in the interview.
4. The implementations and the implications of power relation in the interview.

### **1.3. Limitation of the Problem**

Based on the identification of the problems described above, the limitation of the problem to be examined is as follows:

1. The Strategy of power relation on Donald Trump interview.
2. The functions of the type of power relation the powerful participant putting constraints on the contributions of less powerful participants.

### **1.4. Formulation of the Problem**

Based on the limitations of the problems above, then can formulate the problem as follows:

1. What is the Strategy of power relation on the interview?
2. What is the function of power relation on interview?

## **1.5. Objective of the Research**

Based on the focus of the problems described above, there are some purposes of this research:

1. To find the Strategy of power relation found in the interview.
2. To describe the meanings of power relation of Critical Discourse Analysis found in the interview.

## **1.6. Significance of the Research**

### **1. Theoretical Significance**

This research is expected to add to the vast knowledge of research in the field of Discourse Analysis, especially Critical Discourse Analysis in the area political interview. This research is also expected to be a reference to the further research on Discourse analysis field, especially in the field of linguistic.

### **2. Practical Significance**

This research is expected to provide knowledge about the meaning of power relation in Donald Trump interview, not only in political interview but in society. Also to provide the phenomenon that is expected to be research and analyze, not only in theory use but also in the social life of our society.

## **1.7. Definition of Key Term**

Discourse : Study of the word, noun, clauses, phrase, and sentence.



Critical Discourse Analysis : A variety of studies includes social and political, power relation, reflect and reproduce in social relations, and ideologies in the discourse.

FACE THE NATION : A TV program that exclusively interviews the politicians of the US and publicly airing the show on the media like National Television, YouTube and CNN news media on the US country.

## **CHAPTER II**

### **REVIEW OF RELATED LITERATURES AND THEORETICAL FRAMEWORK**

#### **2.1. Critical Discourse Analysis(CDA)**

Theoretical and methodological foundations for the empirical investigation of the connections between discourse and societal and cultural advancements in various social domains are provided by critical discourse analysis. While (Oscar, Bob, & Tobias, 2018) claim that the term CDA is now more specifically used to refer to the critical linguistic approach of researchers who find that the broader discursive unit of text serves as the fundamental building block of communication. In light of this, it may be said that CDA is a method for examining how language and society interact.

The study and analysis of written and spoken texts to reveal the discursive roots of power, domination, inequality, and bias are the goals of critical discourse analysis, according to Van Dijk, (2007). According to Van Dijk, critical discourse analysts adopt a clear stance, and as a result, they strive to identify, expose, and ultimately combat social inequalities.

With regard to semiosis, Fairclough, (1992) bases his CDA framework on the idea that language plays a significant role in social processes. He clarifies that CDA examines the dialectical relationships between semiosis and other social practice mechanisms. According to Fairclough, a three-level discourse analysis should look at

a text's linguistic characteristics, A theoretical orientation to discourse is the production, diffusion, and event interpretation processes of texts. In addition to the sociocultural practices and structures that a book is rooted in, discourse practices.

Critical Discourse Analysis is the study of language to understand the meaning behind each sentence spoken to a person and another, which is why this research is important because it explains the meaning in the power relation that is so closely related to our society and way of life, according to the studies mentioned above.

## **2.2. Language and Power**

The essence of power is defined by Fowler, (1996) and Van Dijk, (2007) as a type of relation in which it is predictable that asymmetry and control will exist. It is asserted that language use is what makes the asymmetry powerful. Thus, we might draw the conclusion that using language to exercise power is a part of doing so. Power, according to Fowler (Fowler, 2015), is the capacity of an individual or institution to influence the behavior and material well-being of others. Power is a transitive notion that necessitates an unbalanced connection, according to this definition. Power relationships, such as those between parents and children, doctors and patients, employers and employees, and governments and citizens, will be connected when it comes to power.

Based on the aforementioned situation, we can draw the conclusion that the power relation is one of political and social struggle to keep our social life on track and in their rule to maintain the nation of government and social supremacy and lead a nation and society in the twenty-first century..

### **2.3. Power in Discourse**

According to Fairclough, n.d.(2003), ideology-driven speech is used to exercise power is one of the strategies use by people who want to assert their founding. He claims that there are power relationships at play in conversation and that "power battles take place in discourse." According to Nonnan Fairclough et al., (1989), power in discourse is concerned with discourse as a setting for the real exercise and enactment of power relations. He goes on to say that discourse is the benchmark in power battles and that having control over the discourse's guiding principles is a potent tool for maintaining power. He contends that among these mechanisms are customarily followed and acknowledged procedures, Finally coordination through a process of reasoned discussion and conversation, which he likes to term communication, coordination beyond concealed abilities, which he refers to as inculcation. According to Norman Fairclough, n.d. (2001), these methods used by the more powerful ones limit the contributions of the discourse participants who are less strong and is one of the major strategy use in political realm. He highlights four strategies: pronoun, interruption, enforcing explicitness, controlling topic Therefore, it can be claimed that powerful participants control and restrain the

contributions of less powerful players in discourse Norman Fairclough, n.d.(2001). However, the less powerful participants also develop strategies for overcoming such oppressive behaviors.

The researcher deduced from the aforementioned remark that those who create a power relationship are those who have social standing and so make it difficult to oppress. Aggressive acts are less noticeable than the participant's words and behavior, who are at its core.

## **2.4. Power Relation**

In many fields of study, including political science (Karlberg, 2005), sociology (Norman Fairclough, n.d.-a (2001), marketing (*The Struggle for Recognition in International Relations*, n.d.(1995), and many others, the study of power relations is a major topic.

Norman Fairclough, n.d.-b (1997) Assert that power relations are discursive, and CDA explains how power is exercised and negotiated in and via discourse in social connections because many strategies use by powerful participant to enforce their idea and ideology upon people. According to Norman Fairclough et al., (1989), backgrounds are connected to one another in certain circumstances through power connections, which we can also refer to as relations of struggle. Social conflict arises between individuals, individuals and groups, or groups and groups in a variety of contexts, including groups that are dominant and dominated, women and men, black and white, young and elderly, and groupings inside social institutions, among others.

One power relation sentence that is the same but has two meanings if interpreted by different people can make a difference once it reaches the people who heard or read their speech, the researcher can conclude from the aforementioned statement that power relations emerge from people who are in charge of power in their positions such as in the government, society group, firm, organization, and such.

#### **2.4.1. Pronoun**

The pronoun helps to foster an imaginative community while regulating language. Norman Fairclough, n.d.-a(1989) claims that pronouns are employed to replace nouns and are sometimes used for the sake of brevity, sometimes to avoid repeating a noun, and sometimes to avoid the need for definite statements. The pronoun is frequently utilized by the social actor in critical discourse analysis to sway their communication partner.

Personal pronouns provide an interpersonal purpose in conversation, claims (Li, 2019) . That's because they create a specific relationship in a speech between the addresser and the audience. Personal pronouns are therefore seen as a different means of conveying interpersonal meaning in addition to mood and modality. The first person personal pronouns "I" and "we" typically refer to the addresser, the second person personal pronoun "you" typically refers to the person or people being spoken to, and the third person personal pronouns "she," "he," and "they" typically refer to a person or group not participating in the communication. Therefore, it can be inferred

that the speaker utilizes a pronoun to indicate his or her level of power in relation to those around him.

From the aforementioned assertion, the researcher can infer that the pronouns used in language during a Critical Discourse Analysis depend on the circumstance and setting in order to provide a better understanding of what people do in society, the community, and even the media.

### **2.4.2. interruption**

Interference by the speaker as a result of the stronger participant's power can be characterized as interruption. For instance:

**Stephanopoulos:** “--if- if she wins-- I know you think you're gonna win. But if she wins-- if she gets the kind of win that President Obama got, more than 300 electoral votes, several million in the popular vote, will you accept that\_\_”  
**Trump** : “[] **George, I've said\_\_**”

The aforementioned illustration demonstrates that the interruption has taken place. Trump assumes the role of the powerful. **He** interrupted **Stephanopoulos** to prevent him from seeking out the obvious information that in **Trump** Vies is already obvious. The researcher can infer that the interruption in the example above is **referring to is that the speaker conveys something as information needed to be deliver for the listener**, Whether the participant interrupted it or not, and whether the information was true or false.

### 2.4.3. Enforcing explicitness

The inferior participant is asked for a clear understanding from the dominant participant, who is typically shown by asking another question. This helpful tool is typically employed by the more powerful participant to compel the other member to respond or to break the silence of the less powerful player. For instance:

**TRUMP:**“Then you also say, does he know the lawyer on the other side? I mean, does he know the lawyer? And a lot of people...”

**TAPPER:**“But I am not talking about that. I'm talking about..”.

The researcher can infer from the statement above that participant contact can cause the other participant who doesn't have **an irregular relationship and they interact with each other but in the manor of responses that the participant give by their utterance and sentence.**

### 2.4.4. Controlling Topic

Controlling the topic is a strategy for gaining control when **more powerful individuals are frequently in a position to establish the nature and goal of the interaction at the outset and/or to forbid contributions that are not pertinent to the issue.** At this point, the powerful participant has the authority to accept or reject any information or ideas that the less powerful person wants to provide. For instance:

**TRUMP:**“But I will say, from the beginning of 2004, I mean, I have had articles, and there are magazines.”

**TAPPER:** “2004, no question.” (CT)

**TRUMP:**“OK?”

**TAPPER:**“No question.”



### **2.4.5. The Functions of power relation**

Depending on the sorts of power relations used and selected, different functions of power relations apply. This was produced by the speaker's utterances while conveying a sentiment connected to discourse analysis in the context of the spoken environment. The roles of power relations were expressed by (Fairclough and Wodak and Van Dijk, 2007) as power relation, thanking, apologizing, condoling, and boasting. The section that defines and explains the purposes of expressive acts .

### **2.4.6. Previous Research**

The topic of the investigation in a number of earlier studies was register. Five of them are used as a starting point for this inquiry. Hafifa, hafifa (2017) Critical discourse analysis, religious blasphemy, and a video of Ahok's speech Exactly as a research analysis blade against Ahok's speech video is the qualitative descriptive method with the Fairclough's critical discourse analysis theoretical base of textual, discursive practice, and social practice. The study's findings indicate that the languages' sentence structures conflict with their societies.

Second(Siti Nur, 2018)Analysis of Donald J. Trump's remarks in terms of critical discourse. The research employed a qualitative methodology that involved direct observation with no restrictions. uses the macrostructure and microstructure elements of the three-structure Critical Discourse Analysis theory developed by Van

Dijk. The findings of the study demonstrate that Donald J. Trump frequently use repetition and irony to appeal to the addressee's emotions while utilizing logical facts.

Third, (Dea Afifa, 2018)A critical discourse analysis of Hillary Clinton's speech on the Human Rights Campaign Organization identifies the LGBT issue as a human rights issue. thesis for undergraduates. The The researcher is also interested in the Socio Cognitive Approaches that Hillary Clinton uses in her discourse. The author primarily used Van Dijk's Critical Discourse Analysis theory, which is composed of the CDA text's microstructure, superstructure, and macrostructure. The researcher utilized a descriptive-qualitative methodology to examine how Hillary Clinton's speech was described and interpreted. The information was gathered through conversations between medical professionals at the Adi Husada Undaan Wetan hospital in Surabaya. According to the Socio Cognitive Approach, Hillary Clinton's speeches contain a number of aspects, including impression management techniques, mind control, and the creation of other personal images. Additionally, Hillary Clinton employed rhetorical techniques to captivate her audience and demonstrate her support for violations of LGBT rights.

Fourth, Wang, n.d.(2021)The Internet in China The public sphere online, power relation, and political discourse This book examines China's Internet with an emphasis on the political conversations that happen there. Three aspects of China's online political communications are examined using Habermas' public sphere theory as a normative framework: the complex power relation between various types of net

users; the interactions and conflicts between the government and the public on the Internet; and the distinctive online discourse occurring in China. On the government side, online debates are still censored, but the government has started to recognize the importance of the online public sphere and has engaged in communications with net users in a limited capacity. However, they view these communications as ways to promote and reinforce their interests rather than as genuine ways to solicit opinions from the public.

Fith, (Ayu tiara Negm, (2018), THE DOMINANCE OF POWER OVER DONALD TRUMP'S FIGURE IN THE OFFICIAL PRESIDENTIAL SPEECH OF THE UNITED STATES OF AMERICA (THE UNITED STATES RECOGNISE JERUSALEM AS THE CAPITAL OF ISRAEL): A DISCOURSE ANALYSIS The act of promoting nation-building is intertwined with a political actor's capacity to represent a nation. Trump's controversial decision to finally recognize Jerusalem as Israel's capital runs directly counter to US foreign policy over the previous seven decades. This begs the question of the President of the United States' control over a figure that represents his function as a political actor. This study tries to examine Donald Trump's position of dominance over a person through his official presidential speech on recognizing Jerusalem as the capital of Israel. This study examines linguistic patterns based on the complete movie transcript using Teun A. Van Dijk's discourse analysis, as well as The fundamental premise of the study of critical discourse is that the language employed for different activities, such as regulating,

persuading, influencing, decoding, filing, managing moving groups, or persuasion, has different repercussions. It can also be inferred that a powerful political figure's pronouncements, in this example, the United States' status as a superpower, can be utilized to encourage nation-building.

Six, *Perspectives on International Relations. Ifa Anwar (2018.)*. On Twitter, President Donald Trump acts as a social activist. In this work, social actor representation is used to conduct critical discourse analysis on Twitter. The paradigm put forward by van Leeuwen (2008) is essential for comprehending how a person, group of people, or ideology is portrayed in a given discourse. The main subject of this study is how President Donald Trump used social media to discuss politics in a tweet. Therefore, the researcher was interested in examining the specific techniques that President Trump utilized to express his viewpoint on the various subjects. The researcher also asks the reader to understand how straightforward language or tweets can convey concepts both implicitly and overtly.

To give a thorough and understandable analysis of the data, this research used descriptive qualitative as its research design. President Donald Trump posted fourteen tweets between January and April of 2018. The data underwent multiple phases of analysis. Reading the entire set of data was the first step in understanding the intended significance of the chosen technique. The conversation was then examined using van Leeuwen's framework. The data was thirdly categorized to address the study

topic. When the social actor is concealed, it is excluded; inclusion occurs when the doer is made clear. Lastly, making judgments based on the research's findings.

The results of the data study showed that President Donald Trump prefers to employ an inclusion strategy over an exclusion strategy. The book largely makes plain the social actor representations that are pertinent to the president's persona without phatic communion. He employed those tactics while also having an intended meaning. For instance, draw internet users' attention, stereotype, and support viewpoint. From the fourteen data points examined, it can be inferred that Trump has effectively used his position as US president to persuade netizens of his political viewpoint and preferences through the tweet.

Sevent, Power Relation in Donald Trump's Political Campaign 2015. Putra, Arif Angga. This study intends to examine the power relations that Donald Trump displayed throughout his presidential campaign, which was held in New York on June 16, 2015. Because it is one of the power sources used to discursively affect people's ideologies, the power relationship becomes a crucial issue to be examined. Political discourse typically employs the use of elite speakers with positions of power to manipulate and build people. Due to their position as powerful speakers, politicians may easily manipulate and persuade people to act in their own interests.

Because it describes the rhetorical approach of power relations used in Donald Trump's political campaign, this study is a descriptive one. Due to the fact that the

data in this study are expressed in words and utterances, it is also characterized as qualitative research. The discourse structure of the text is used in this study's analysis of utterances to reveal the discursive strategy of power relations as a means of influencing people's minds.

The conclusion of this study demonstrates that Donald Trump reflects his power relations toward people by employing discourse structures, a discursive strategy that generally aims to delegitimize other people, races, and politicians by victimizing, underestimating, and even discriminating against them in order to increase his power over them. Through his discourse structures of the campaign speech, Donald Trump primarily portrays the power relationship to make the audiences ideologically influenced and controlled. These discourse structures include topic, schema, and structural units that demonstrate the power toward others.

It is advised that future academics look into how power relationships are reflected in various contexts, including media, educational, and legal discourses. Additionally, it is advised that future researchers use other CDA theories such as Scollon and Scollon's (2001) theory on mediated discourse and Wodak's (1996) theory on discourse sociolinguistics. These theories will enrich the data analysis of CDA's theory and help them uncover various social issues reflected in social practices, such as racism and gender discrimination.

Eight , Mbori Bob and Omondi Tobias are Maleya Oscar et al., 2019), In order to identify the power relations between the two groups during the interaction process in the secondary school setting, the goal of this essay is to analyze the English messages delivered to students (hearers) by teachers and prefects (speakers) during school assembly sessions. The underlying premise is that since many messages are conveyed in English at school assemblies, the language used in those messages has a significant impact on the type of relationship that exists between students (hearers) and their instructors and prefects (speakers). The study used data from school assembly speaking events where 20 assemblies from ten secondary schools in Bungoma County were purposefully sampled and tape recorded. The results of the study were qualitatively assessed with special emphasis paid to the frequency with which phrases and sentences displaying domination occur. The research used the Critical Discourse Analysis theory to establish the power relations in the messages communicated. It was anticipated that the findings would be applied to improve teacher-student relationships, which are crucial for fostering school discipline and consequently result in greater academic performance.

Ninth , Al-Tarawneh Majid, (2019), A Critical Discourse Analysis of Persuasion in the Presidential Debates Between Donald Trump and Hillary Clinton, The current study attempts to offer a critical discourse analysis of the ideological stances, power relation, and persuasion strategies used by Hillary Clinton and Donald Trump throughout their American presidential debates. The Critical Discourse

Analysis (CDA) model proposed by Fairclough served as the foundation for the approach used in this study (1995). When the debates were thoroughly analyzed, it became clear that both candidates used a variety of persuasive techniques to address all of the pressing concerns, including immigration, the economy, human rights, and others. Based on Fairclough's CDA model, the author suggests additional research into the presidential debates across various cultural contexts.



### 2.4.7. THEORITICAL FRAMEWORK

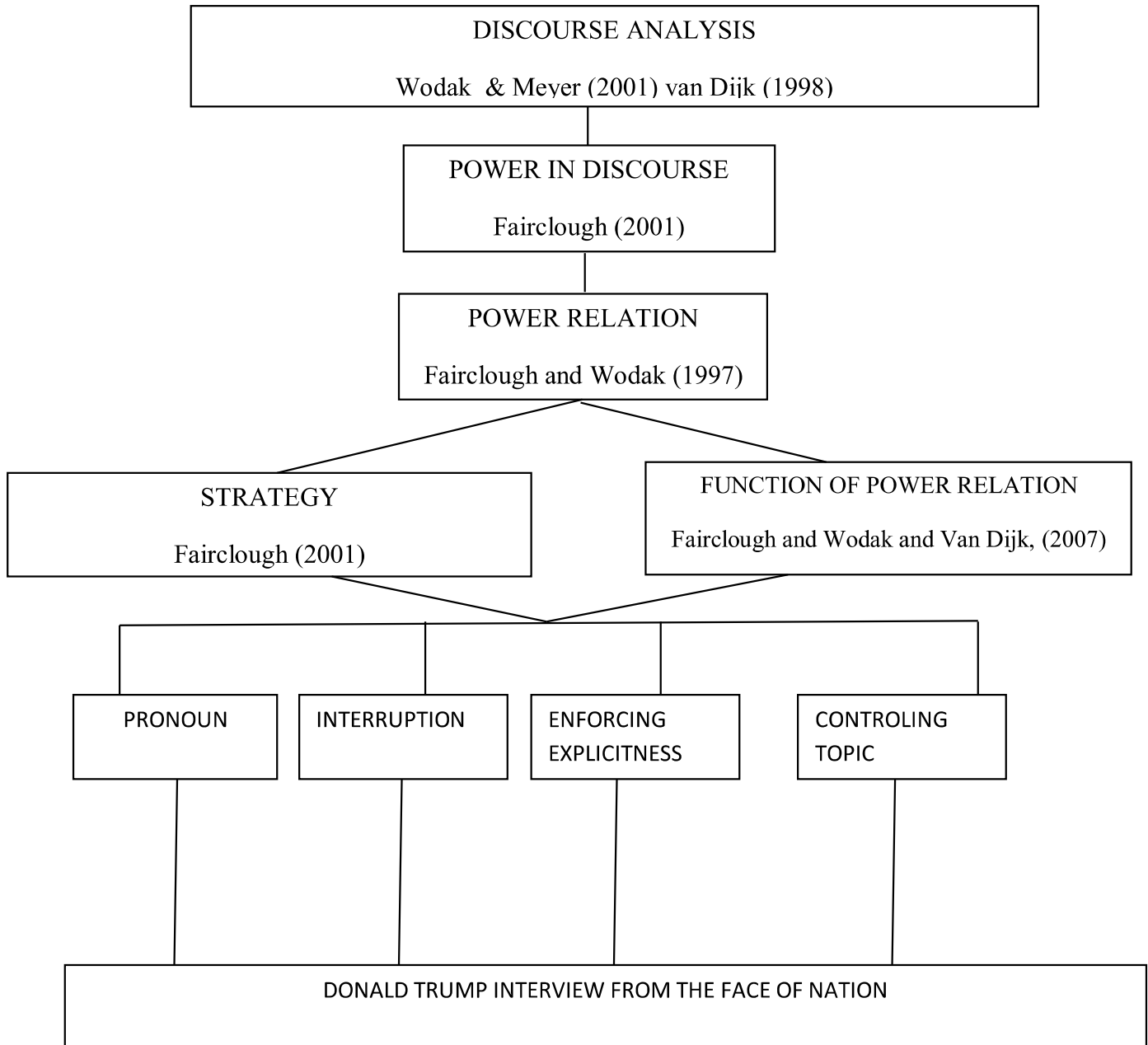


Figure 2.4.7 Theoretical Framework

## **CHAPTER III**

### **Method of Research**

#### **3.1. Research design**

The Researcher study's methodology was qualitative. The fact that this research was done to explain and interpret the data specifically makes it descriptive. The power relationship that Donald Trump, the president of the United States, discussed in his interview recordings with several anchors is adopted in this study. The power relationship between Donald J. Trump and the others that was depicted in the interview parts was then clarified by reference to the pronouns used. Additionally, it went on to illustrate how the powerful player controls the less powerful participant using Fairclough's procedural strategies for gaining the upper hand in discourse.

Additionally, the observation method is used for data collecting in this qualitative research methodology. According to Sugiyono, a qualitative research method is one that is based on failsafe post-positivism and is used to examine an object's condition in nature (as a side experiment). The examiner serves as the primary instrument for the qualitative data analysis, and the results place a greater emphasis on meaning than generalization (Sugiyono, 2009:15). According to Sugiyono's opinion, the researcher came to the conclusion that qualitative research refers to the context or words examined, and the researcher determines the findings of qualitative research.

### **3.2. Object of the research**

The power relations in the Donald J. Trump interview tapes were the primary focus of this study's critical discourse analysis. Donald J. Trump and the anchors, who are available in a representational power, will thus be the subject of this study.

The realm of discourse can be examined on a wide range of themes in the world of journalistic interviews. encompassing society, politics, and education. If the context or the object is not well understood by many people, on the other hand, the field might also lead to many misunderstandings among many people, and it could result in a disagreement between society, a nation, and also an ideology in a particular nation.

### **3.3. Method of Collecting Data**

Researchers using data acquired or collected as their primary source for this study. This study employs the Sudaryanto method, which is an observation or review method. Examining language use when conducting a review is in fact a review and is consistent with either an observational or review method (Sudaryanto , 2015). The researcher can draw the conclusion that Sudaryanto's definition can be used as a tool for language use observation or review. The methodology used in this method is a note technique. As a sophisticated technique, the note technique involves recording data on "cards" Sudaryanto, (2019). The researcher thus comes to the conclusion that the note approach is a means of gathering data by taking notes or writing.

1. The researcher listen, reads and write down the main speech part in interview.
2. The researcher chooses or filter only power relation words or sentence which is on the interview.
3. The researcher arranged the data source of the type of sentence and meaning contained in the interview.

### **3.4. Method of Analyzing Data**

The researcher will conduct a material analysis using the information gathered. According to Sudaryanto, the researcher attempts to address issues that are directly present in the data during the data analysis phase Sudaryanto, (2019). One could argue that this explanation directly addresses the issue raised by the study's data. The same approach was taken in this study. According to Sudaryanto, the analogous method is an external approach that is independent of and unrelated to the corresponding language Sudaryanto,( 2019).

According to this concept, the researcher chooses the identification or language. Then, basic strategies are used in data analysis procedures: Techniques for determining elements According to Sudaryanto, the Decisive Element's technique is based on the researchers' mental makeup Sudaryanto, (2019). Furthermore, Depending on their skill level, the researchers can use the determinant element technique to analyze data. According to Sudaryanto, how to analyze data is to dissect, parse, and characterize the situation at hand using a few standard methods. The three

types of aspects that make up the rule in issue in this instance are the variety of researchers, the types, and the relationships between the rules of principle Sudaryanto, (2019). The researcher then utilized the following five parts of the data analysis phase:

1. The researcher selects data sources from the interview.
2. The researchers find out each definition of the words, sentence and utterance through the data source found in the interview.
3. The researcher clarifies the definitions and power relation subject such as language and power, power relation and pronoun that is used.
4. The researcher analyzes the selected data source and then matches the data source through Critical Discourse Analysis.
5. The researchers seek to know or conclude data such as data sources from the interviews, strategy and function and meaning.